

HYDROGEN STORAGE – RELIABLE AND SAFE TANK INFRASTRUCTURE

Save. Deploy. Use.

FutureE H2 storage integration –

Storing and supplying hydrogen

The FutureE H2 storage connection is a convincing solution for storing and providing provision of hydrogen, especially for stationary applications – with high flexibility, safe handling and seamless integration into your H2 infrastructure.

info@future-e.com

+49 (0)7022 789602-0

Your advantages at a glance:

- **Flexible storage:** Up to three H2 banks can be operated independently of each other, allowing for an optimised refuelling strategy according to the customer requirements.
- **Pressure-resistant:** Storage pressures of 300 bar and more can be realised with the solution.
- **Safe tank integration:** Individual safety functions can be implemented in the tank control unit.
- **Reliable supply:** Hydrogen can be supplied directly to the application at the desired inlet pressure via a pressure regulating valve block.
- **Flexible control:** The H2 tank control unit can be connected directly to the applications via a CAN interface.



Mobile network



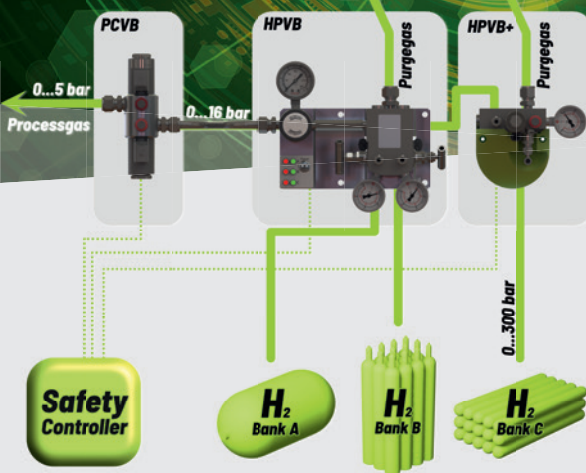
Business and industry



Infrastructure

CUSTOMISED H2 SOLUTIONS

Storing and supplying hydrogen reliable and safe



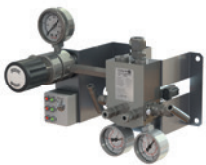
Our H2 storage integration with safety functions ensures the reliable and safe storage and provision of hydrogen in stationary applications. Whether for pressure control for the actual application, hydrogen supply for the application at the medium-pressure level or the activation of different H2 banks - we supply you with a customized solution according to your requirements.

Technical Specification

Pressure control valve block with safety shut-off valve



H2 changeover unit



H2-bank extension



Control of the system pressure and safety valve for switching off the H2 gas supply

Input pressure	max. 16 bar
Control voltage/current	12/24V DC (1,5/0,8A)
Input pressure sensor	0 - 40 barg
Output pressure sensor	-1 - 3 barg
Sensor signal	0,5 - 4,5 V

Switching unit between two gas benches that are to be emptied separately from each other

Input pressure	Up to 300bar (higher pressures on request)
Output pressure	max. 16 bar (fixed)
Function	Reset function after container replacement
Pressure sensor	0 ... 400 barg
Sensor signal	4 ... 20 mA
Control voltage/current(valves)	24V (1,4A)

Expansion of the gas supply with an additional H2 bank (Bank C)

Input pressure	Up to 300 bar (higher pressures on request)
Pressure sensor	0 ... 400 barg
Sensor signal	4 ... 20 mA
Control voltage/current (valve)	24V (1,4A)

Safety controller:

A safe switch-off path for safety functions can be displayed via the FutureE control unit. Internal safety functions for pressure monitoring are implemented in the software.

FutureE GmbH

Hohes Gestade 8
D-72622 Nürtingen

✉ info@future-e.com

☎ +49 (0) 7022 789602-0



More information:

future-e.com/en/h2